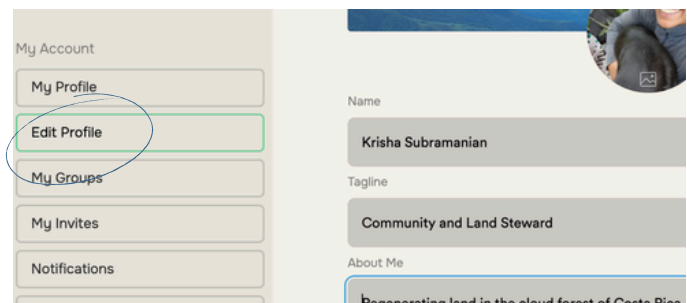
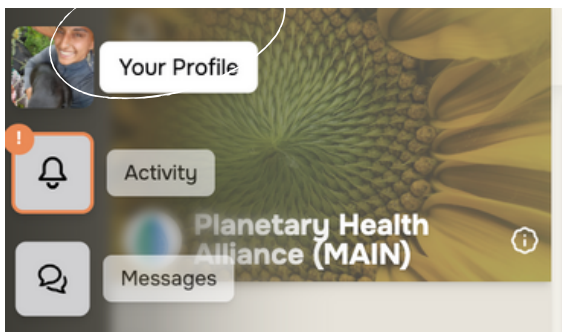


# PHA ONBOARDING GUIDE

The PHA Online Members Community is a free and inclusive virtual coordination space where individual and organizational Alliance Members can easily connect, sustain collaborations, and share "who's doing what, where" in Planetary Health around the world.

## STEP ONE: SET UP YOUR PROFILE

- This is an important first step in your Hylo journey. Filling out your profile allows others in the PHA to know you - your skills, interests, and what to reach out to you about.
- Click the user icon in the upper-left corner and click **PROFILE**.
  - Add a photo to help us recognize you, upload a cover photo, and link desired social media handles.
  - Create a bio! This can include an about you, what you are passionate about, **Skills & Interests**, **What You're Learning**, your **Website/Affiliations** (in Hylo and beyond), contact info, and more.
  - \*\*\* **Include your location so you show up on the Group Map!**

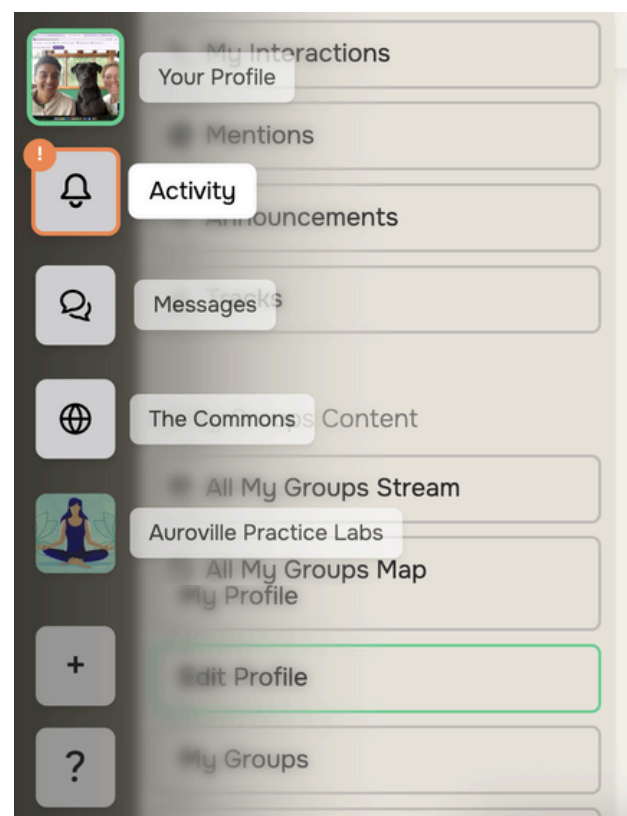


## STEP TWO: EXPLORE HYLO

In the Global Navigation Panel (the left-side of Hylo) you will see:

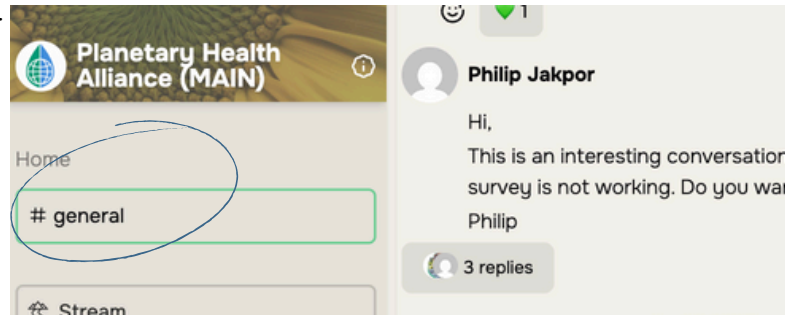
- **Your Profile** to access "My Content", All your Groups content, and your **Settings**
- **Activity** for Notifications
- **Messages** for Direct Messaging
- Your Groups in Alphabetical Order
- The **Create Icon (+)** to create a Post or Group
- **(?) Feedback and Support**

Click on the PHA group in the Global Navigation Panel to access content in the group!



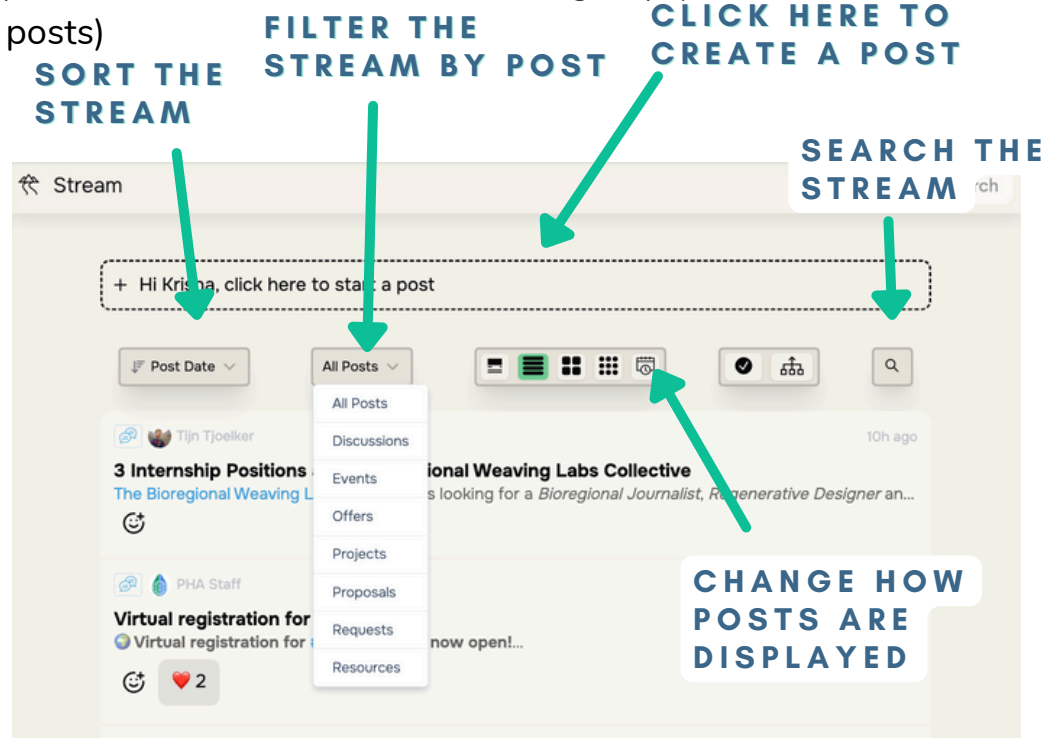
# THE #GENERAL CHATROOM

- Your “home” or landing page when you enter the PHA Hylo Group is the **#General Chatroom**. This is a place you can create quick chats OR more long-form posts.
- Here, you can comment on other’s chats, respond with emoji reactions



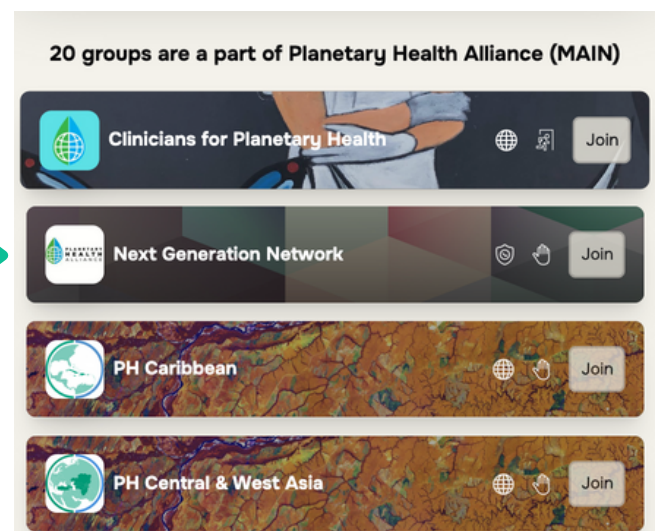
## THE STREAM

- The **Stream** includes all the posts that have been shared in the group (while the #General chatroom include chats and posts)
- **Sort** the post by the date it was posted, posts with latest activity, or popular posts (those with the most activity)
- **Filter** the Stream by Post Type (Discussions, Events, Offers, Projects, Proposals, Requests and Resources)
- **Adjust** how posts display, list view, card view, etc.
- **Search** the stream using the magnifying glass.



## DISCOVER GROUPS

Click on the **Groups** tab to explore the PHA network and join those that are interesting to you!



# STEP THREE:EXPLORE THE PHA CONTINUED

## EXPLORE THE GROUP MAP

Everything that is connected to the PHA group can show up on the **Group Map** If there is a location attached! This includes **networked groups**, **group members** and **posts**. Click on Map to explore what is happening around you!

SAVE A MAP VIEW AND GET NOTIFIED WHEN THERE IS NEW CONTENT

SEARCH FOR YOUR LOCATION TO SEE WHAT'S NEAR TO YOU

FILTER WHAT YOU SEE ON THE MAP

The screenshot shows a world map with various colored pins indicating activity. A sidebar on the left allows filtering by category: Discussions, Requests, Offers, Resources, Projects, Proposals, Events, Members, and Groups. A search bar at the top of the sidebar is labeled 'Search for a location...'. A heart icon in the top left corner is labeled 'SAVE A MAP VIEW AND GET NOTIFIED WHEN THERE IS NEW CONTENT'. A search bar at the top right is labeled 'SEARCH THE MAP'. A callout box over the map says 'SEE A NATIVE TERRITORIES MAP LAYER'. A callout box over a post says 'CREATE A POST DIRECTLY ON THE MAP'.

## SEARCH THE MEMBER DIRECTORY

Click on the **Member Directory** to see all the members in the PHA! Search the member directory by name, skill or interest. Click on a **member profile** to learn more about them and send a direct message!

Member Directory

environment

Sort by Name

**Aaron Guest**

Phoenix, Arizona, United States

Assistant Professor of Aging

**Abbey Johnson**

Austin, Texas, United States

**Abhishek Kumar**

Ranchi, Jharkhand, India

"Nothing About Us Without Us"

**Abubacarr Janneh**

The Gambia

Send a Direct Message

Zapotal, San Ramón, Alajuela, Costa Rica

**Community and Land Steward**

Community Lead for Hylo <3

regenerating land in the cloud forest of Costa Rica

Passionate about community weaving, bioregional organizing, and growing food.

SKILLS & INTERESTS

permaculture spanish circular economy ayurveda

# STEP FOUR: CONNECT ON HYLO

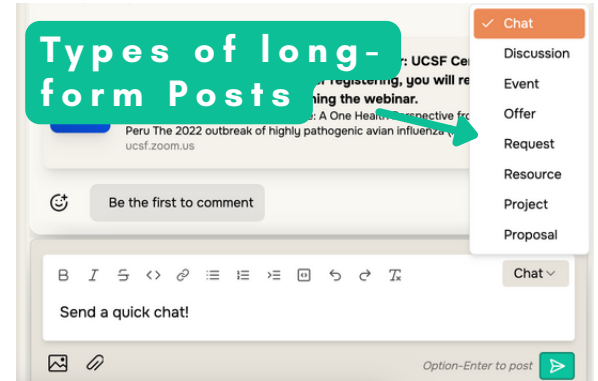
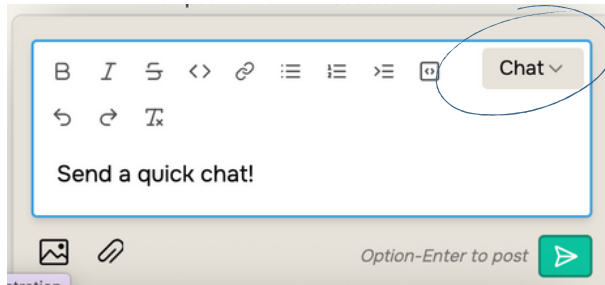
Connect on Hylo by sending chats or creating Posts.

- Chatrooms are indicated by a #[chatroom] - for example the **#General** chatroom, which is the landing page for the PHA.
- In chatrooms you can either send a quick chat or a post. The Stream is just for posts!

## CHATS VS POSTS

**Chat message** - for quick or shorter comments

**Post** - for a long form, or long running topic of conversation



- There are multiple types of posts you can create!
  - **Discussion** - General conversations, questions, and community dialogue
  - **Offer** - Resources, skills, services, or items you're sharing with the community
  - **Request** - Things you need help with, looking for, or want to collaborate on
  - **Event** - Announcements for meetings, gatherings, workshops, or activities
  - **Project** - Ongoing initiatives that need collaboration or want to share progress
  - **Proposal** - Ideas or suggestions for the community to consider and potentially vote on

Depending on the type of post, there are different fields. Let's look at this **event post**:

In the "To" field, include the groups and chatrooms where you want to share your post. You can share a post in multiple groups/chatrooms.

In the description, you can embed Youtube or Vimeo videos, so they are playable from the stream

Use **#topics** to organize posts

You can add a location to any post so that it shows up on the **Group Map**

You can attach images and files to posts as well

- You can edit a post you previously created by clicking on the three vertical dots in the upper right corner of the Post. You can also:
  - Duplicate the Post
  - Copy a link to the Post
  - Delete the Post

